



Six
Degrees

Birmingham Central Data Centre

Six Degrees
6dg.co.uk



Enabling your brilliance

Birmingham Central Data Centre

Six Degrees specialises in delivering application performance management, monitoring, reporting and security, deployed on hybrid public/private cloud platforms of innovation. Everything Six Degrees Group does is underpinned by its own data centres, data network and voice switching infrastructure. Welcome to our state-of-the-art Birmingham data centre facility, sitting at the very heart of the UK fibre networks.

Introduction to Birmingham Central Data Centre

Our Uptime Institute Tier III aligned facility is located both in the geographic centre of the United Kingdom (UK) and in the centre of Birmingham. The purpose-built site was designed to be both resilient and affordable.

Our experience in operating numerous data centres within the UK has ensured that our site is what your business needs.

- **Network providers** - we have a growing number of national and international network providers on-site.
- **Multiple site connectivity** - the site is seamlessly meshed with Six Degrees' own facilities alongside 39 other third party colocation sites via our own Next Generation Network (NGN).
- **On-site Services** - we offer build rooms, secure storage areas, dual loading docks, a breakout area, meeting rooms for presentations and plenty of parking.

We provide our customers with a facility where they know that their assets and, as a result, their IT operations are in a high availability, secure environment - all taken care of by Six Degrees.

Let us help you

Our data centres offer a glimpse into the selection of services available from our compelling portfolio, all structured and designed to solve your business infrastructure needs.

With support from our passionate in-house engineers alongside an innovative offering to create the solution that you need, we will be happy to help.

If you would like to visit our central Birmingham facility to view the quality of our site and the network connectivity we can offer, please contact us on:

CALL
+44 (0)20 7858 4935

EMAIL
colo@6dg.co.uk

[6dg.co.uk/what-we-do/
colocation-hosting](https://6dg.co.uk/what-we-do/colocation-hosting)



BIRMINGHAM CENTRAL DATA CENTRE
Front entrance



Birmingham: The Logical Choice for Colocation

Due to its central location, Birmingham is ideally placed for both connectivity and easy access by road, rail and air. Just 1 ½ hours from London and Manchester, our site is in the very heart of Birmingham. With the pending arrival of HS2 and travel times set to reduce even more, getting to Birmingham will be even quicker.

What makes Birmingham a great choice?

Birmingham is the second largest population centre and city in the UK. Given its status as such, it's an ideal and affordable spot to site your business.

- **Convenient** - only minutes from Birmingham's three train stations, you and your business can get to us easily and quickly.
- **Affordable** - Birmingham is a true alternative to other more expensive business locations and is an ideal place to set-up an operating hub.
- **Highly Connected** - Birmingham has a central position in the UK fibre network, giving your business resilient, affordable connectivity.



Connectivity hubs to strengthen your business



Our state-of-the-art data centre, built in 2016, is in the centre of Birmingham. As an energised city that offers a high quality of life and working environments, take advantage of Birmingham's spirit for your business.

Current Carriers

- BT
- Virgin
- Zayo

Near-net

- COLT
- Interoute
- Level3
- SSE



BIRMINGHAM CENTRAL DATA CENTRE
Meeting Room



Six Degrees' Colocation Offering

Our data centre services are about more than just space and power; we also offer remote/smart hands capability such as power cycling of physical equipment, soft reboots of servers, cabling, physical backup management, network setup and racking/un-racking. In addition to physical entity support, we also offer logical entity support with highly qualified engineers (e.g. Microsoft and VMware trained) managing live customer environments.

Secure, Safe and Efficient

Private Cages

Our private cages maximise the security, efficiency and structural integrity for configurations of six or more standard 2-8kW racks. The layout of our cages can be designed and scaled to meet bespoke customer requirements.

Dedicated Racks

Our medium capacity, dual feed racks can deliver 2-8kW using a standard 42U or specialised 48U set-up. Choose from our 600mm wide x 1200mm deep rack, or, if you prefer, we also offer an 800mm x 1200mm premium option. Our dedicated racks are perfect if you're looking to outsource critical IT equipment or establish a presence in multiple strategic locations.



Business Continuity

Our geographically diverse data centres span the UK, reaching from the financial core in London to the hub of the Midlands. Our multi-site flexibility allows us to offer resilience in the same or multiple regions through our Six Degrees [Backup](#) and [Disaster Recovery](#) services.

High Capacity Pods

Our highly secure dedicated pods provide greater capacity and base footprint than our energy-efficient variant. They deliver 8-20kW per rack and can be tailored to meet customer requirements.

Accreditations





BIRMINGHAM CENTRAL DATA CENTRE
Rack cabinets

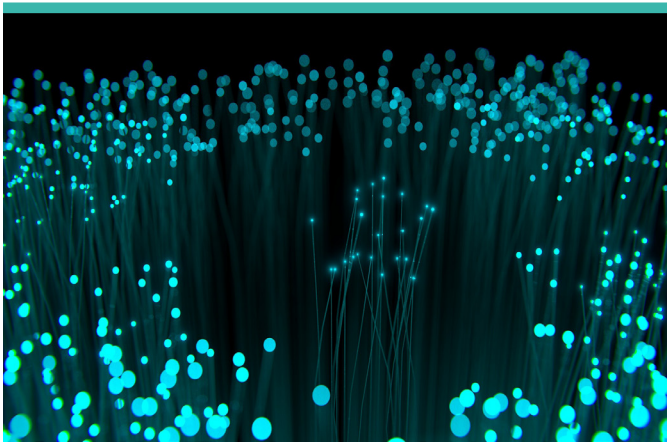


Our PoP Network

We have owned and operated our own voice switching infrastructure and data network since 2001 and, following a multimillion pound investment, we have created one of the most cutting-edge Next Generation Networks (NGN) in the industry.

46 Points of Presence

More than just a UK network, we have an international reach with core Points of Presence (PoPs) on the east coast of the US and mainland Europe.



Rest of the World PoP List

| Country | City | Site | PoP Code | IP | SIP |
|-----------------|---------------|------------------------|----------|----|-----|
| Germany | Frankfurt | InterXion | IXFR1 | ✓ | ✓ |
| France | Paris | Telehouse 2 (Voltaire) | THVLT | ✓ | ✓ |
| The Netherlands | Amsterdam | Nikhef | NKNIK | ✓ | ✓ |
| The Netherlands | Amsterdam | Equinix AM7 | TCAM2 | ✓ | ✓ |
| United States | New York City | DRT NYC1 (60 Hudson) | TX60H | ✓ | ✓ |

UK PoP List

| Sites | PoP Code | IP | SIP | TDM |
|--|----------|----|-----|-----|
| Birmingham Sites | | | | |
| Six Degrees BHC | SDBD1 | ✓ | ✓ | |
| Six Degrees SDL | SDSDN | ✓ | ✓ | ✓ |
| Six Degrees SDL | SDSDS | ✓ | ✓ | ✓ |
| BT Central Exchange | BTBHM | ✓ | ✓ | |
| BT Midlands Exchange | BTMLD | ✓ | ✓ | |
| Leeds Site | | | | |
| AQL DC3 (Salem Church) | AQDC3 | ✓ | ✓ | |
| London and the South of England Sites | | | | |
| Six Degrees LD1 | SDL1 | ✓ | ✓ | |
| Six Degrees SKD | SDSKD | ✓ | ✓ | |
| ARK Corsham | ARCOR | ✓ | ✓ | |
| ARK Farnborough | AKFAR | ✓ | ✓ | |
| BT Baynard House | BTBAY | ✓ | ✓ | |
| BT Bishopsgate | BTBIS | ✓ | ✓ | |
| BT Bloomsbury | BTBLO | ✓ | ✓ | |
| BT Clerkenwell | BTCLK | ✓ | ✓ | |
| BT Covent Garden | BTCOV | ✓ | ✓ | |
| BT Faraday Building | BTFAR | ✓ | ✓ | |
| BT Monument | BTMON | ✓ | ✓ | |
| BT Poplar Exchange | BTPOP | ✓ | ✓ | |
| Equinix Slough (LD4/LD5/LD6) | EQLD5 | ✓ | ✓ | |
| Equinix 6-7 Harbour Exchange | TCH67 | ✓ | ✓ | |
| Equinix 8-9 Harbour Exchange | TCH89 | ✓ | ✓ | |
| Equinix Powergate | EQLD9 | ✓ | ✓ | |
| Global Switch 1 (North) | GSLD1 | ✓ | ✓ | |
| Global Switch 2 (East) | GSLD2 | ✓ | ✓ | |
| InterXion London City [1 & 2] | IXLD1 | ✓ | ✓ | |
| Iomart - Epworth Street | IOLD1 | ✓ | ✓ | |
| Level3 Braham Street | L3BRA | ✓ | ✓ | |
| Level3 Goswell Road | L3GWR | ✓ | ✓ | |
| Redcentric (City Lifeline) | CLLD1 | ✓ | ✓ | |
| DRT Bonnington House | TCBON | ✓ | ✓ | |
| DRT Meridian Gate | TCMER | ✓ | ✓ | |
| DRT Sovereign House | TCSOV | ✓ | ✓ | |
| Telehouse East | THEST | ✓ | ✓ | ✓ |
| Telehouse Metro | THMTR | ✓ | ✓ | ✓ |
| Telehouse North | THNOR | ✓ | ✓ | ✓ |
| Telehouse West | THWST | ✓ | ✓ | |
| Telstra London Hosting Centre | TILHC | ✓ | ✓ | ✓ |
| Volta | VLGSS | ✓ | ✓ | |
| Manchester Sites | | | | |
| BT Blackfriars Exchange | BTBLA | ✓ | ✓ | |
| Equinix Joule House | TCJOU | ✓ | ✓ | |
| Equinix Kilburn House | TCKBN | ✓ | ✓ | |



SIX DEGREES' NGN
Switch stacks



Birmingham Central Site Specifications and Technical Data

Six Degrees' Birmingham Central site is the premier, carrier-neutral data centre in the Midlands. Its unparalleled performance combined with our resilient, network provide a seamless and secure platform.

| Features | Benefits |
|----------------------------------|---|
| Power & Resilience | <ul style="list-style-type: none">• 4.3MVA delivered by separate, diverse 11kV utility feeds• Average density 1.5kW/m²• Distributed redundant system with separate A&B power feeds per rack• Uninterruptible Power Supply (UPS) configured as N+1 with minimum 10 minute autonomy• Multiple, continuously rated diesel generators configured as N+1• Minimum 48 hours of fuel located on-site |
| Security & Monitoring | <ul style="list-style-type: none">• Full perimeter security including PAS 68 rated access gates and dedicated gatehouse• Electronic access control including PIN and biometrics, with full auditing and reporting• Three, separate single person anti-tailgating entry points• 105 digital CCTV cameras covering all internal and external areas with analytics and virtual tripwire• Up to 90 days' retention of CCTV footage Security systems linked to the building management system (BMS) and Six Degrees' network operations team |
| Fire Protection | <ul style="list-style-type: none">• High Sensitivity Smoke Detection (HSSD) System• Double interlocked, gas-based fire suppression system• Fire controls in accordance with BS 5839 and BS 6266• Building-wide, floor-based fire detection with ionisation and optical detectors in multiple zones |
| Cooling | <ul style="list-style-type: none">• Indirect adiabatic fresh air cooling• N+1 redundancy• Maintained to ASHRAE TC9.9 |
| Connectivity | <ul style="list-style-type: none">• Truly Carrier neutral - connectivity to 39 third party sites• Access to multiple telecommunications providers including:<ul style="list-style-type: none">• BT• Virgin Media• Zayo• Access to the 6DG Next Generation Network (NGN) providing data centre to data centre (including 39 third party sites), internet and MPLS connectivity across the UK, Europe and the US |
| Amenities | <ul style="list-style-type: none">• 15 parking spaces and a loading bay• Secure storage in addition to both a de-box room and a build room• Customer rest area with tea and coffee facilities• Meeting rooms (available upon request)• Informal meeting spaces with booths including TV and telephony capability• Two dedicated meet-me rooms |



BIRMINGHAM CENTRAL DATA CENTRE
Front entrance driving lanes



Six
Degrees